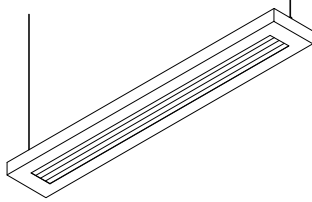
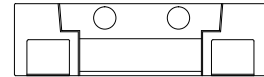




Type
Project



ALS82



APPLICATIONS

Architectural Linear Series ALS82 is designed to suspend in an interior space providing excellent general illumination. The ALS82 Series has a high efficiency reflector system and provides effective vertical and horizontal foot candles with several distribution options. The low profile modular body can be suspended by aircraft cables or stems and delivers high VCP and low watt consumption per square foot. Office applications typically yield 1.0 watts per square foot or less. This luminaire is available with efficiencies in excess of 90%.

CONSTRUCTION

Manufactured from precision die formed 20 gauge CRS with solid end caps. The integral alignment system provides easy row alignment and installation. Standard aircraft cable adapts to all ceiling systems and is field adjustable without tools.

FINISH

The ALS Series standard paint finish of polyester powder coat is applied after a five stage rust inhibitive process. Matte White is standard. Refer to Options Section for special paint options.

All steel parts are covered by Apollo Lighting's 10 Year Limited Warranty. Refer to Warranty Section for details.

ELECTRICAL

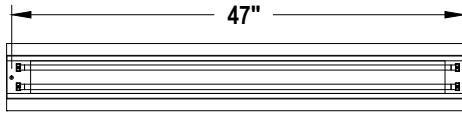
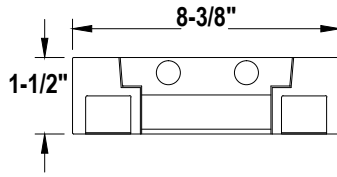
High efficiency electronic ballasts are standard. A wide range of dimming, daylight harvesting, automated building control, occupancy control and emergency systems can be specified to meet today's energy code requirements. Refer to Ordering Information Options.

Continuous row applications are supplied with quick-connects between fixtures and all ballasts have UL required quick disconnects. All Apollo Lighting fixtures are UL Listed.

ORDERING INFORMATION

Series	Size	Lamps	Type	Shielding	Finish	Voltage	Options
ALS82							
ALS82	4 (48")	1	T5	N	W	1	F
	8 (96")	2	T5HO	Indirect Only	White	(120v)	Fuse
	12 (144")	3	T8	OL	S	U	EM
		2U/1D		Opal Lens	Silver	Universal	Emergency Ballast
		Center lamp		BB	B	(120-277v)	DC
		100% Down		Bold Baffle	Black	2	Dust Cover
				SI	CC	(277v)	ST
				P95 Satin Ice	Custom	Dimming and	18" Stem Mounting
				MOD	Colors	Sensors	AC
				Special Lenses		See	18" Aircraft Cable
				See Accessories		Accessories	

Type
Project



PHOTOMETRIC REPORT ALS82-4-2T8-BB

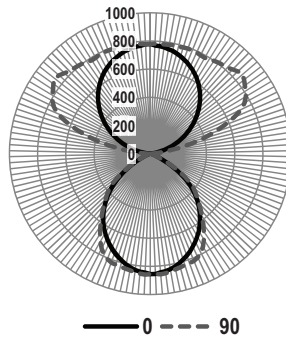
COEFFICIENTS OF UTILIZATION

RC	80				70				50				30				10				0
RW	70	50	30	0	70	50	30	0	70	50	30	0	70	50	30	20	70	50	30	20	0
0	.88	.88	.88	.88	.79	.79	.79	.79	.30	.64	.64	.64	.49	.49	.49	.36	.36	.36	.36	.30	
1	.81	.77	.74	.72	.73	.70	.68	.27	.57	.55	.54	.44	.43	.42	.33	.33	.32	.32	.27	.27	
2	.74	.68	.64	.60	.67	.62	.58	.24	.51	.48	.45	.40	.38	.37	.30	.29	.28	.24	.24	.24	
3	.68	.60	.55	.50	.61	.55	.50	.21	.45	.42	.39	.36	.33	.32	.27	.26	.24	.21	.21	.21	
4	.62	.54	.48	.43	.56	.49	.44	.19	.40	.37	.34	.32	.30	.27	.25	.23	.22	.18	.18	.18	
5	.57	.48	.42	.37	.52	.44	.39	.17	.36	.32	.29	.29	.26	.24	.22	.20	.19	.16	.16	.16	
6	.53	.43	.37	.32	.48	.40	.34	.15	.33	.29	.26	.26	.23	.21	.20	.18	.17	.14	.14	.14	
7	.49	.39	.33	.28	.44	.36	.30	.13	.30	.26	.23	.24	.21	.19	.19	.17	.15	.13	.13	.13	
8	.45	.35	.29	.25	.41	.33	.27	.12	.27	.23	.20	.22	.19	.17	.17	.15	.14	.12	.12	.12	
9	.42	.32	.26	.22	.38	.30	.25	.11	.25	.21	.18	.20	.17	.15	.16	.14	.12	.11	.11	.11	
10	.39	.30	.24	.20	.36	.27	.22	.10	.23	.19	.16	.19	.16	.14	.15	.13	.11	.10	.10	.10	

ZONAL LUMEN SUMMARY

Spacing Criteria 0-180:	1.14		
Spacing Criteria 90-270:	1.23		
ZONE	LUMENS	% LAMP	% FIXT
0-30	649.10	11.4%	13.5%
0-40	1031.50	18.1%	21.4%
0-60	1619.30	28.4%	33.7%
0-90	93.20	1.6%	1.9%
90-120	1712.50	30.0%	35.6%
90-180	3098.20	54.4%	64.4%
0-180	4810.00	84.4%	100.0%
Total Luminaire Efficiency = 84.4%			

POLAR GRAPH



Note: Apollo Lighting reserves the right to make any design change for continuous improvement which will not change the overall appearance or decrease performance. All ceilings are to be adequately reinforced by others. All fixtures are to be wired by a licensed electrician only. The information contained herein is the sole property of Apollo Lighting and may not be used without prior written consent.



APOLLO LIGHTING creative lighting solutions since 1950
 212 S. 12th Avenue • Mount Vernon, NY 10550
 1-866-300-1294 • Phone: 914.664.3600 • Fax: 914.664.6091
 info@apollolighting.net • www.apollolighting.net

