

## Now available in LED!



### APPLICATIONS

Architectural Linear Series ALS72 is designed to suspend in an interior space providing excellent general illumination. The ALS72 Series optically designed interior reflectors provides effective vertical and horizontal foot candles with several distribution options. The low profile modular body can be suspended by aircraft cables or stems and delivers high VCP and low watt consumption per square feet. Office applications typically yield 1.0 watts per square foot or less. This luminaire is available with efficiencies in excess of 92%.

### CONSTRUCTION

Precision formed 18 gauge CRS. Integral Alignment System provides easy row alignment and installation. Standard aircraft cable adapts to all ceiling systems and can be field adjustable without tools.

### FINISH

The ALS72 Series standard paint finish of polyester powder coat is applied after a five stage rust inhibitive process. Matte White is standard. Refer to Options Section for special paint options.

All steel parts are covered by Apollo Lighting's 10 Year Limited Warranty. Refer to Warranty Section for details.

### ELECTRICAL

High efficiency electronic ballasts are standard. A wide range of dimming, daylight harvesting, automated building controls, occupancy controls and emergency systems can be specified to meet today's energy code requirements. Refer to Ordering Information Options.

Standard quick connect for continuous row application with UL required power disconnect provided for each electronic ballast. All Apollo Lighting Luminaires are UL Listed.



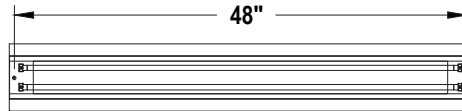
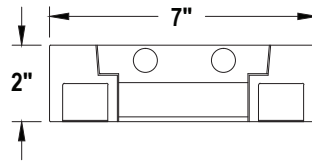
## ORDERING INFORMATION

Series	Size	Lamps	Type	Shielding	Finish	Voltage	Options
ALS72							
ALS72	4 (48")	1	T5	N	W	1	F
	8 (96")	2	T5HO	Indirect Only	White	(120v)	Fuse
	12 (144")	3	T8	OL	S	U	EM
		2U/1D		Opal Lens	Silver	Universal	Emergency Ballast
		Center Lamp		BB	B	(120-277v)	DC
		100% Down		Bold Baffle	Black	2	Dust Cover
				SI	CC	(277v)	ST
				P95 Satin Ice	Custom	Dimming and	18" Stem Mounting
				MOD	Colors	Sensors	AC
				Special Lenses		See Accessories	18" Aircraft Cable
				See Accessories			

Now available in LED!

ALS72

Type
Project



**PHOTOMETRIC REPORT ALS72-4-2T8-PB**

**COEFFICIENTS OF UTILIZATION**

RC	80				70				50				30				10				0					
RW	70	50	30	0	70	50	30	0	50	30	20	50	30	20	50	30	20	0	50	30	20	0	50	30	20	0
0	.93	.93	.93	.93	.84	.84	.84	.28	.66	.66	.66	.50	.50	.50	.35	.35	.35	.28								
1	.85	.81	.78	.75	.76	.73	.70	.24	.58	.56	.54	.44	.43	.42	.31	.30	.30	.24								
2	.78	.71	.66	.61	.69	.64	.60	.20	.51	.48	.45	.39	.37	.35	.27	.26	.25	.20								
3	.71	.63	.56	.51	.63	.56	.51	.18	.45	.41	.38	.34	.32	.30	.24	.23	.22	.17								
4	.64	.55	.49	.43	.58	.50	.44	.15	.40	.36	.32	.31	.28	.25	.22	.20	.19	.15								
5	.59	.49	.42	.37	.53	.45	.39	.13	.36	.31	.28	.27	.24	.22	.20	.18	.16	.13								
6	.55	.44	.37	.32	.49	.40	.34	.12	.32	.28	.24	.25	.22	.19	.18	.16	.14	.11								
7	.51	.40	.33	.28	.45	.36	.30	.11	.29	.25	.21	.23	.19	.17	.16	.14	.13	.10								
8	.47	.36	.29	.25	.42	.33	.27	.10	.27	.22	.19	.21	.17	.15	.15	.13	.12	.09								
9	.44	.33	.26	.22	.39	.30	.24	.09	.24	.20	.17	.19	.16	.14	.14	.12	.10	.08								
10	.41	.30	.24	.20	.37	.27	.22	.08	.22	.18	.15	.17	.14	.12	.13	.11	.09	.08								

**ZONAL LUMEN SUMMARY**

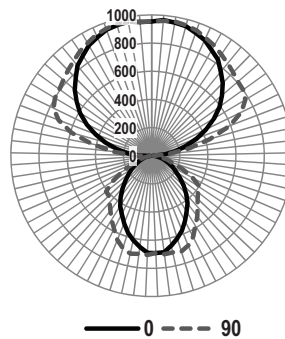
Spacing Criteria 0-180: N.A.  
Spacing Criteria 90-270: N.A.

ZONE	LUMENS	% LAMP	% FIXT
0-30	517.70	8.9%	9.8%
0-40	815.40	14.1%	15.5%
0-60	1336.40	23.0%	25.3%
0-90	275.90	4.8%	5.2%
90-120	1612.30	27.8%	30.6%
90-180	3664.90	63.2%	69.4%
0-180	5277.20	91.0%	100.0%

Total Luminaire Efficiency = 91%



**POLAR GRAPH**



**Note:** Apollo Lighting reserves the right to make any design change for continuous improvement which will not change the overall appearance or decrease performance. All ceilings are to be adequately reinforced by others. All fixtures are to be wired by a licensed electrician only. The information contained herein is the sole property of Apollo Lighting and may not be used without prior written consent.



**APOLLO LIGHTING creative lighting solutions since 1950**  
 212 S. 12th Avenue • Mount Vernon, NY 10550  
 1-866-300-1294 • Phone: 914.664.3600 • Fax: 914.664.6091  
 info@apollolighting.net • www.apollolighting.net



Now available in LED!